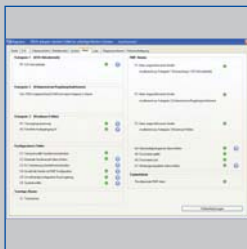


Configuration software

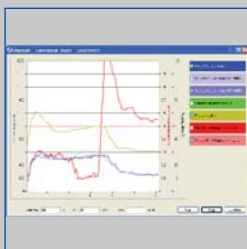
Type EasyConnect



EasyConnect control panel



EasyConnect alarms



EasyConnect diagram

Parameter	Value
Sollwert (GF = 100%)	720 m³/h
Sollwert (GF <= 100%)	720 m³/h
Istwert	724 m³/h
Klappenposition	0 % geöffnet

EasyConnect volume flow rates

Laborabzugs-Regler - EasyConnect

Gerätebezeichnung: TROX Geb. A1, Raum 251, Abzug 25, ID - 0

Betriebsart: Standard Betrieb

Frontschieberüberwachung EN 14175: Begrenzung unterschritten

Stützstrahl-Technologie: nicht konfiguriert

Regelungskonzept - Einstromsensor:

Sollwert	0,50	m/s
Istwert	0,60	m/s

Abluftwäscher: nicht konfiguriert

Entrauchungsfunktion: nicht konfiguriert

Volumenstrom:

Sollwert (GF = 100%)	720	m³/h
Sollwert (GF <= 100%)	720	m³/h
Istwert	724	m³/h
Klappenposition	0	% geöffnet

Gleichzeitigkeitsregelung: Aktueller Zustand: Volumenstromreduzierung nicht wirksam

Gleichzeitigkeitsfaktor (GF): 100 %

Alarmstatus: Kein Alarm

USV-Funktion: nicht vorhanden

Bewegungsmelder: nicht konfiguriert

Erkannte EASYLAB Systemteilnehmer: Gesamtanzahl: 1

Serviceintervall: Eingestelltes Serviceintervall: 365 Tage, Zeitraum seit letztem Service: 141 Tage

For the commissioning and diagnosis of EASYLAB components

Software for the configuration and diagnosis of controllers Type TCU3 and adapter modules TAM

- Display of actual operating values
- Interactive navigation
- Extensive diagnosis and diagram functions
- Creation of configuration protocols and backup files
- The software automatically recognises the controller type and displays the corresponding operating values and parameters
- Selection of dialogue language and of unit of measure for the volume flow rate
- Connecting cable and USB adapter are included in the supply package

Optional equipment and accessories

- Bluetooth adapter module BlueCON for wireless communication

Type		Page
EasyConnect	General information	2.6 – 10
	Basic information and nomenclature	2.7 – 1

Description



EasyConnect start window

Application

- EasyConnect configuration software for EASYLAB controllers TCU3 and adapter modules TAM
- Used to change the configuration of fume cupboard controllers, supply air or extract air controllers, differential pressure controllers, and adapter modules
- Extensive functions for configuration and commissioning
- Functions for test and fault diagnosis
- Documentation of configuration settings

Variants

- CAB: Configuration software with connecting cable and USB RS485 (cable connection)
- BC: Configuration software with Bluetooth adapter module BlueCON (wireless communication)

Special features

- Display of actual operating values
- Interactive navigation
- Extensive diagnosis and diagram functions
- Creation of configuration protocols and backup files
- Selection of dialogue language and of unit of measure for the volume flow rate
- Connecting cable and USB adapter are included in the supply package
- Optional Bluetooth adapter module BlueCON for wireless communication

Parts and characteristics

- PC software
- Interface adapter USB 2.0, RS485, including CD with driver software
- Plug-in cable
- PC side: 9-pin D-SUB socket; EASYLAB side: RJ45
- Graphical user interface (Windows-based)
- Based on the Microsoft.Net Framework (included in the software package)
- Commissioning wizard to facilitate adjustments to the controller configuration
- Access to configuration parameters can be restricted (read only)

System requirements

PC or notebook

- Windows XP with SP3
- Windows Vista, SP2 or higher
- Windows 7 32-bit and 64-bit versions
- USB or Bluetooth interface
- Screen resolution 800 × 600

Licensing

- Licence is valid for one computer
- Licence is linked to the hardware (licence key required)

Installation and commissioning

Prepare computer

- Install software
- Connect interface adapter USB-RS485
- Install driver for USB-RS485 from CD
- Request licence key and enter licence key
- Select communication port COMx

Commissioning of EASYLAB

- Connect EASYLAB controller or adapter module
- Start software
- Open configuration or diagnosis window and carry out required actions

Function

The software displays values, parameters and functions on a graphical user interface (GUI). The software automatically recognises the controller type and displays the corresponding operating values and parameters

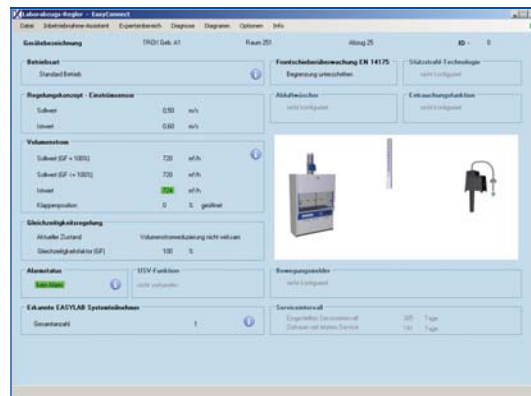
- Display of actual operating values
- Display of room operating values on the controller with room management function
- Commissioning of individual controllers and room controllers (controllers with room management function), with commissioning wizard
- Diagnosis for all controller connections
- Graphical display of the most important operating values in a time diagram
- Backup function to restore the factory or commissioning settings
- Identification of programme users and hence documentation of configuration changes by user

- Dialogue language: English or German
- Unit of measure for volume flow rate: m³/h, l/s or cfm
- Device configuration is saved in files and can be used to create a project database
- Documentation of the controller configuration in a PDF protocol file with individual logo and letterhead data

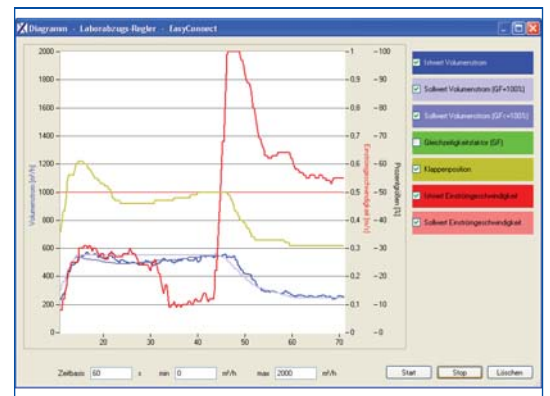
It is possible to define different user groups with limited access to functions (defined by licence code). The software supports several levels of access rights.

- Display of actual operating values and diagnosis data
- Display and change of configuration data
- Change of service interval
- Backup function

EasyConnect start window

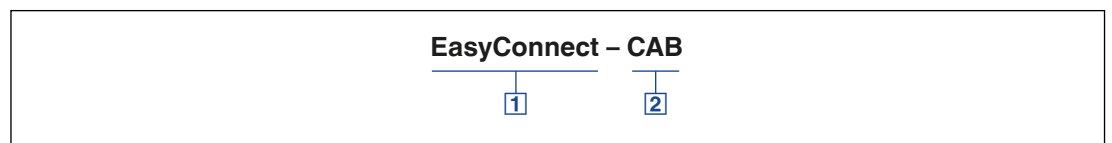


EasyConnect diagram



Order code

EasyConnect configuration software



1 Software
EasyConnect Configuration software

2 Interface adapter
CAB USB-RS485 and connecting cable (cable connection)
BC Bluetooth adapter module BlueCON (wireless communication)

Air management control systems

Basic information and nomenclature

2



- Product selection

Air management control systems

Basic information and nomenclature

Product selection

	Control						Monitoring	
	System EASYLAB			System TCU-LON-II			TFM / TPM	
	Fume cupboard control	Room balancing	Room pressure control	Fume cupboard control	Room balancing	Room pressure control	TFM-1, TFM-2 Volume flow rate monitoring	TPM Room pressure monitoring
Area of application								
Hardware components								
Adapter module		●						
Expansion module for 230 V mains supply	Optional	Optional	Optional				Optional	
Expansion module for 230 V mains supply and UPS	Optional	Optional	Optional					
LonWorks interface	Optional	Optional	Optional	●	●	●		
Expansion module – solenoid valve	Optional	Optional	Optional	●	●	●		
Expansion module – fume cupboard lighting	Optional						●	
Control panel with 2-character display	●							
Control panel with 40-character display	●	●	●					
Control panel – TCU-LON-II standard				●			●	●
Control panel – expanded, AF-1							●	
Functions								
Monitoring – volume flow rate	●	●	●	●	●	●	●	
Monitoring – face velocity	●			●			Only with TFM-2	
Monitoring – sash position	●			●			●	
Monitoring – room pressure			●			●		●
Constant volume flow control	●	●		●	●			
Variable volume flow control	●	●		●	●			
Constant volume flow rate difference		●	●		●	●		
Room pressure control			●			●		
Room management function		●	●					
Additional functions								
Interface to central BMS	●	●	●	●	●	●	●	●
Damper blade position signal	●	●	●					
Diversity control		●	●		●	●		
Volume flow rate setpoint change		●	●		●	●		
Smoke extract	●							
Motion detector	●			●				
Control of automatic sash device	●						●	
Configuration software								
EasyConnect	●	●	●					
PlugIn TCU-LON II				●	●	●		
MConnect							●	●

● Possible

□ Not possible